

ZEFU 泽富

泽富精密模具（东莞）有限公司
Zefu Precision Mould (Dongguan) Co., Ltd.

地址/Add: 广东省东莞市长安镇上沙振发路1号

No.1 Zhenfa Road Changan DongGuan GuangDong China

电话/Tel: 0769-82286301

邮箱/E-mail: sales@zf-mold.com

网址/Web: www.zf-mold.com

sales@ok-mold.com



扫描官网,
了解更多!
Scan the official website,
learn more!

Micron level 0.001mm
微米级0.001mm

ZEFU provide extremely high precision mold
Components and plastic mold to
companies coast to coast throughout the world.

泽富专注为世界各地企业
提供高精密模具零件和精密注塑模具

ZEFU 泽富





Company Profile

公司概况

成立于2004年，是一家专业从事精密模具零件制造的生产型企业，产品涉及：微注塑、液态硅胶、医疗、光电、MIM、新能源汽车线束、电脑、手机连接器等。

泽富现已能制造那些几乎被认为不能达到精度的产品。现公司的研磨精度达±0.001mm；线切割精度达±0.001mm；放电精度达±0.002mm；CNC精度达±0.003mm。

经过十多年的发展，公司于2012年取得了ISO9001:2008的质量体系证书，并将精密模具零件制作经验导入延伸到了模具制造行业。现已经发展成为一家可信赖的、为客户提供全方位塑胶产品制作的生产型企业，业务范围涵盖：精密模具零件制作、工程设计、塑胶模具制造、注塑以及后处理等等。

2004
成立

2012
取得了
ISO9001:2008的质量体系证书

Founded in 2004, it is a production-oriented enterprise specializing in the manufacture of high-precision mold parts. The products involve: micro-injection molding, liquid silicone, medical, optoelectronic, MIM, new energy vehicle wiring harness, computer, mobile phone connector, etc.

Nowadays, ZEFU Mold is ability to making very tight tolerance components that maybe found to be nearly impossible to achieve. Our grinding precision up to ±0.001mm, wire cutting precision up to ±0.001mm, EDM precision up to ±0.002mm, CNC machining precision up to ±0.003mm.

With more than 10 year's development, ZEFU Mold obtained ISO9001:2008 Certification in 2012 and translated our precision components making experiences into mold making industrial. ZEFU MOLD now has become a reliable manufacturer could provide full service of plastic parts making which cover high precision mold components making, engineering design, plastic injection mold making, molding second processing and so on.





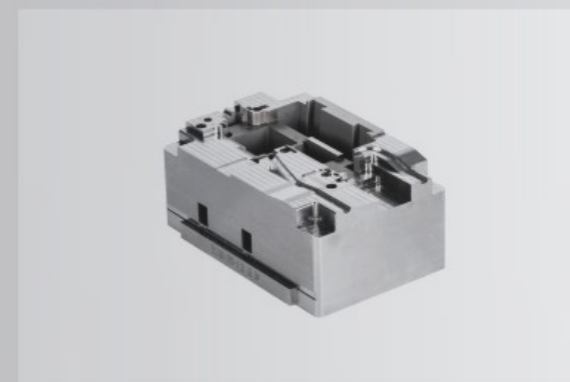
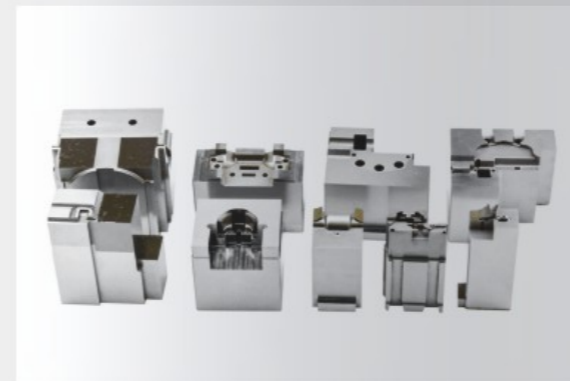
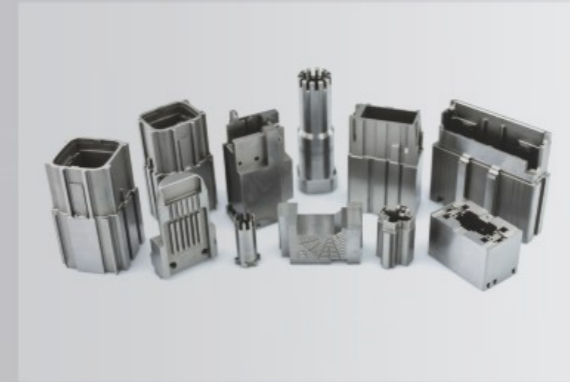
Precision Mold

高精密模具



High Precision Mold Components

高精密模具零件





MIM产品精度 **0.005M-0.01M**
MIM product precision

High Precision Injection Mold(MIM)
高精密高精密注塑模具 (MIM)

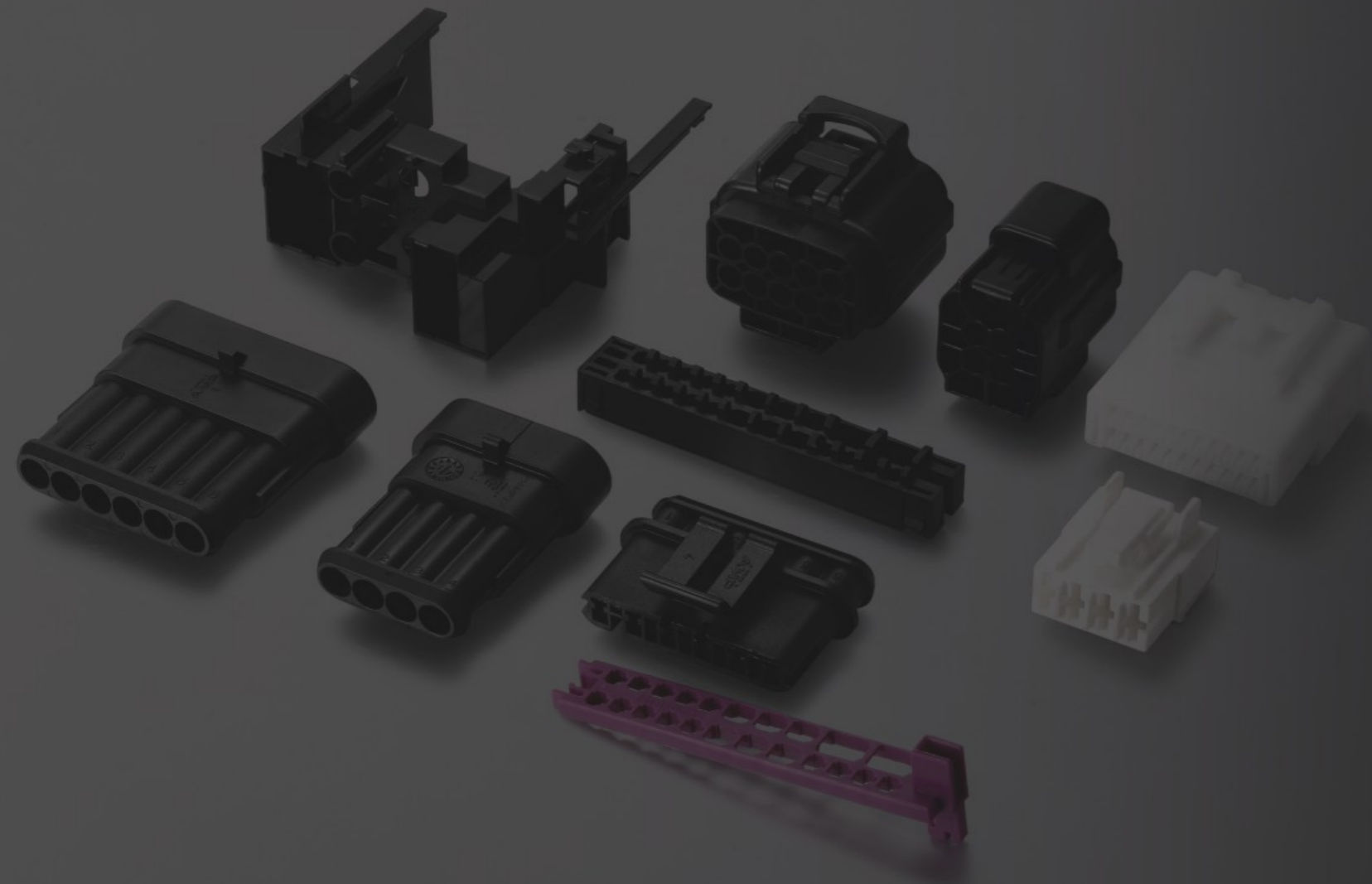
High Precision Injection Mold

高精密注塑模具 (MIM)



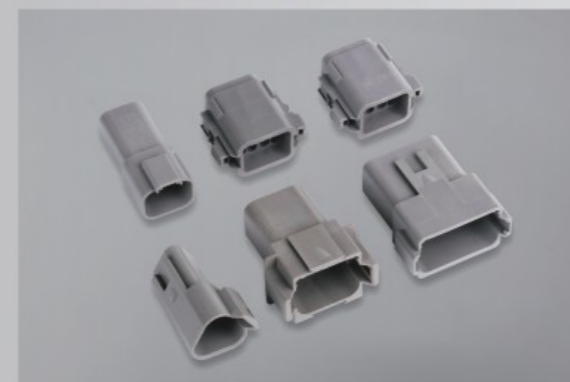
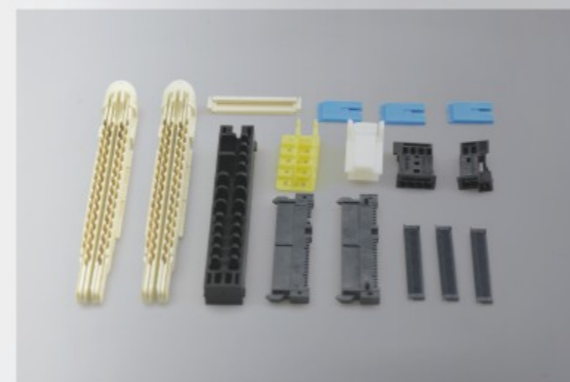
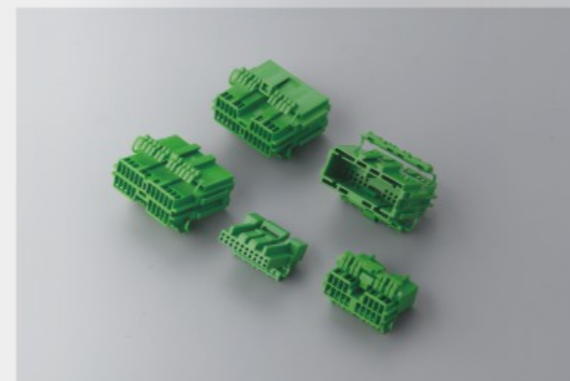
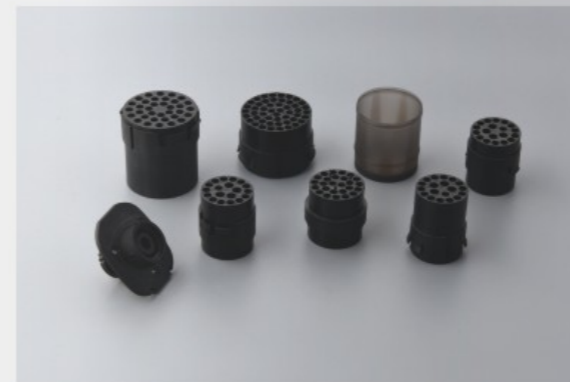
High Precision Injection Mold

高精密注塑模具



High Precision Injection Mold

高精密注塑模具



CNC Machining

CNC加工

Precision
精度 $\pm 0.002\text{mm}$

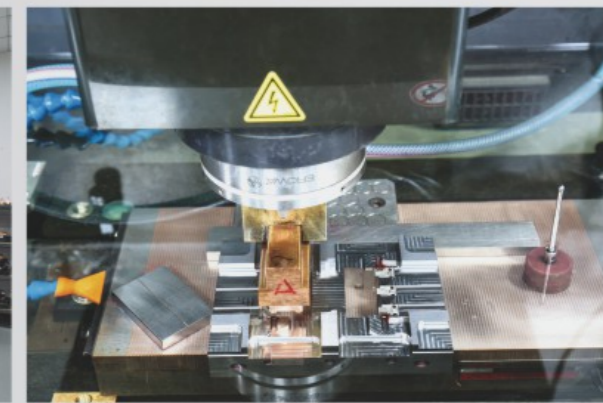


EDM Spark Discharge

EDM电火花放电

Precision
精度 $\pm 0.002\text{mm}$

Corner Clearing
清角 $< 0.03\text{mm}$





Digital Lathe 数控车床

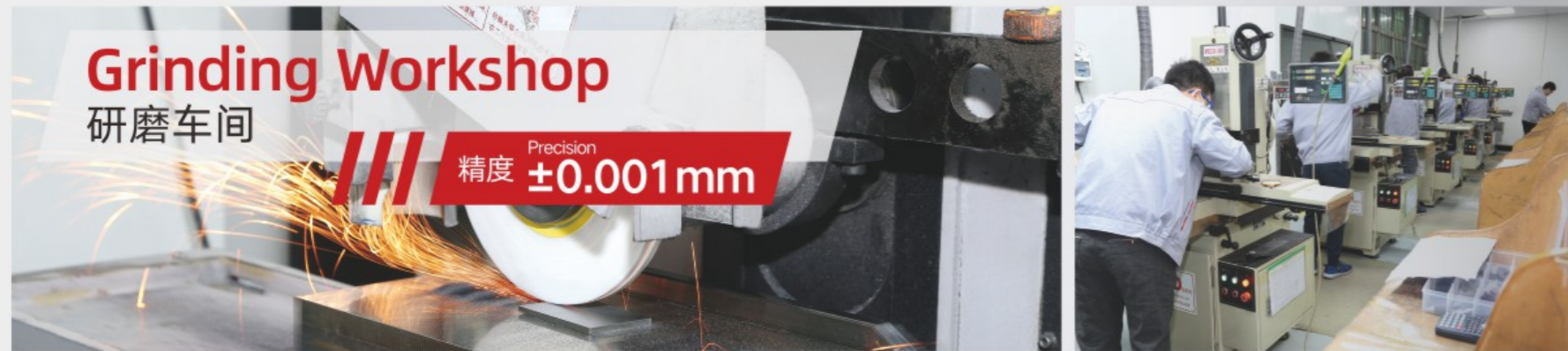
/// Precision
精度 $\pm 0.003-0.005\text{mm}$



Wire Cutting 慢走丝线割

/// Precision
精度 $\pm 0.001\text{mm}$ Minimum wire diameter
最小线径 $\Phi 0.05\text{mm}$





Inspection Workshop 检测车间

- 精密制造：严格检验
- 客户满意度>98%
- 客户投诉次数≤3次/月
- 产品合格率>99%
- Precision manufacturing: Strictly inspection
- Customer satisfaction>98%
- Customer complaints≤3T/M
- Product Qualification Ratio>99%



LK CMM Inspection Machine 英国LK integra三次元检测



Honorary Qualifications

荣誉资质



ZEFU Services provided

泽富提供的服务

★我们通常使用的钢材:

1.2344、1.2343、1.2379、1.2083、1.2767、EIMAX、UNIMAX、CORRAX、STAVAX、TYRAX、POLMAX、PM23、ASP2023、HPM40、S-STAR、PD613、HPM31、HPM38、W360、W302等等。

Steels we usually use:

1.2344, 1.2343, 1.2379, 1.2083, 1.2767, EIMAX, UNIMAX, CORRAX, STAVAX, TYRAX, POLMAX, PM23, ASP2023, HPM40, S-STAR, PD613, HPM31, HPM38, W360, W302 etc.

★可提供证明, 热处理证明

可提供特殊的表面处理, 抛光 (100#、500#、600#、1000#等)、特殊涂层 (TAI等)。

Certificate available, heat treatment certificate
Can provide special surface treatment, polishing (100#, 500#, 600#, 1000#, etc.), special coating (TAI, etc.)



材质证明 Material Certificate



热处理报告 Heat-Treatment Report